

IN-LINE PATIO DOORS

MAINTENANCE

Lock lubrication

Clean and lightly grease external moving parts and frame keeps annually.

Cylinders

Do not attempt to lubricate cylinder.

Track

Free any debris or dirt from drainage and track.

Wheels

Do not attempt to lubricate wheels.

Handles

Clean and lightly oil all externally moving parts annually.

Frames

Clean frames regularly, using soapy water.

Mastic seal

Check for any signs of cracking annually.

If found, remove and replace with new.

We recommend Silversil silicone sealants, available from Eurocell branches nationwide.

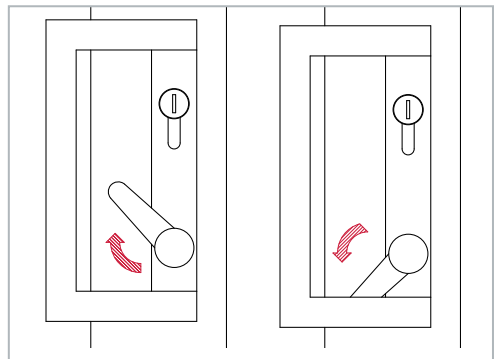
OPERATING INSTRUCTIONS

To unlock

Insert key into lock cylinder and rotate, push up the lever on the handle and slide the door to open.

To lock

Slide the door back to the fully closed position, push the lever downwards until it stops and turn the key to lock the door.



Note: the lock cannot be operated while the door is open due to the anti-slam device